



Apache Guacamole™

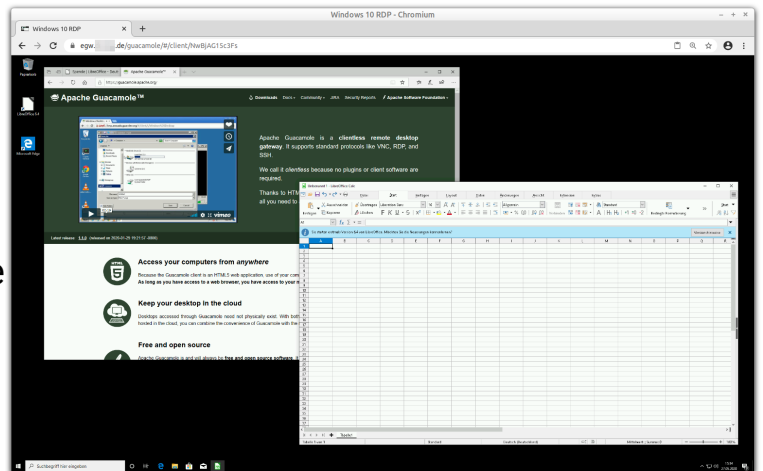
What is Apache Guacamole™?

Apache Guacamole™ (hereinafter only Guacamole) is a **clientless remote desktop gateway**. This gateway accesses desktops / consoles via **VNC, RDP or SSH** on one side and makes them available **in a browser** on the other side.

Clientless in this case means that **no software** has to be **installed** on the PC/tablet or a browser add-on. You only need a browser!

Guacamole is written in **Java** and is published as **Free and Open Source Software** under the Apache License V. 2.0.

Commercial product support and other services around Guacamole are offered by companies. These companies provide products based on Apache Guacamole™, develop them further and return the development to the Apache project.



If appropriate prerequisites and requirements are given, **Guacamole can replace** or supplement an **installation and operation of MS Terminalserver + Parallels RAS/Citrix Virtual Apps/...** Thus, high license costs and a complex installation / configuration are avoidable.

Due to the pure operation in the browser, a high level of security is guaranteed, since the client does not directly access the target systems (and vice versa). With a SSL encryption (HTTPS) and secure authentication (2FA) you can/should/must secure the access.

Links

Apache Guacamole™

<https://guacamole.apache.org/>

What is Guacamole?

<https://guacamole.apache.org/doc/gug/preface.html>

GitHub

<https://github.com/apache/guacamole-server>

Using Guacamole

<https://guacamole.apache.org/doc/gug/using-guacamole.html>

Administrating
Guacamole

<https://guacamole.apache.org/doc/gug/administration.html>

FAQ

<https://guacamole.apache.org/faq/>

Live Demo

<https://demo.glyptodon.com>



EGroupware

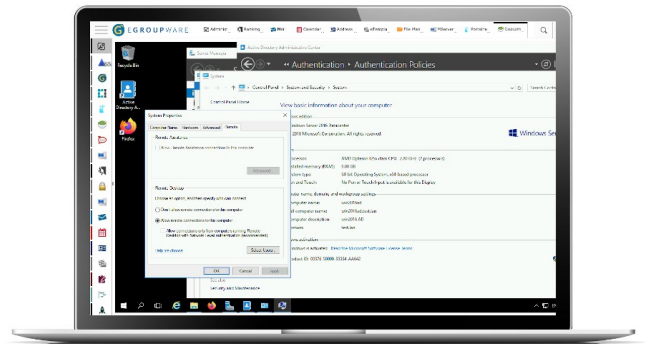
SMART ONLINE OFFICE

Guacamole in EGroupware

The **EGroupware Guacamole** app is **installed as a package** to an EGroupware standard installation. The docker container is downloaded, the reverse proxy is configured, Guacamole is integrated as an app and **Guacamole is ready to use**. Described in detail under [0].

EGroupware can authenticate against its own MariaDB/MySQL database, against an AD, LDAP or mail. Guacamole then authenticates via OAuth against the OpenID/OAuth2 server built into EGroupware.

Two-factor authentication is possible with **software authenticator** and **USB/NFC sticks**. The transport encryption is done by the EGroupware proxy. Thus the access to Guacamole is secured.



For the integration **EGroupware** and **Guacamole** access database tables/views **together**. Thus, connections can be created and authorizations assigned from EGroupware. In Guacamole the **users and groups** from EGroupware are available.

The **installation** and **configuration** is therefore **extremely lightweight**, especially with an existing EGroupware installation. Also an **installation** of EGroupware/Guacamole only for the operation of Guacamole is very **fast and easy**.

Links

EGroupware/Guacamole
Installation/Troubleshooting

<https://www.egroupware.org/en/guacamole/>
<https://github.com/EGroupware/egroupware/wiki/Apache-Guacamole-managed-by-EGroupware>

**[0] Apache Guacamole -
The integration into EGroupware**
Service for Guacamole

<https://help.egroupware.org/t/uk-apache-guacamole-the-integration-into-egroupware/74734>
<https://www.egroupware.org/en/egroupware-support/>

Contact:
Stefan Unverricht
EGroupware Community Manager
E-mail: : su@egroupware.org
WWW : www.egroupware.org



EGw-Flyer Guacamole v2 from 04 August 2021
The text document can be requested from the
Community Manager for further use.
Available as a current PDF at:
<https://www.egroupware.org/en/community/>